



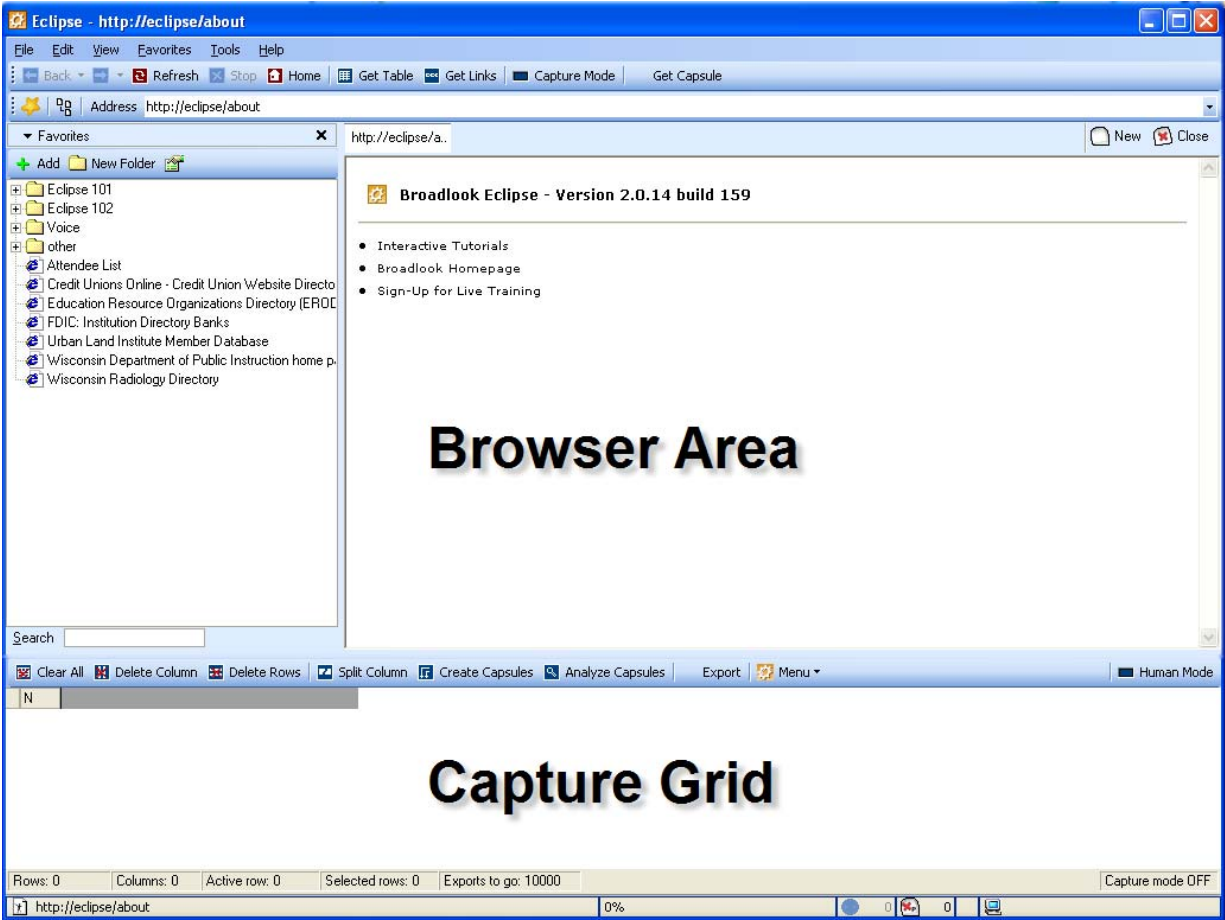
Eclipse

What does Eclipse do?

Eclipse is designed to capture a structured list of information from a webpage. It automates the process of manually copy and pasting to grab relevant information.

Layout Basics

Browser area – Typical web browsing is done on the top section.
Capture grid – All your data will be stored in this area.



The browser area includes:

Address bar



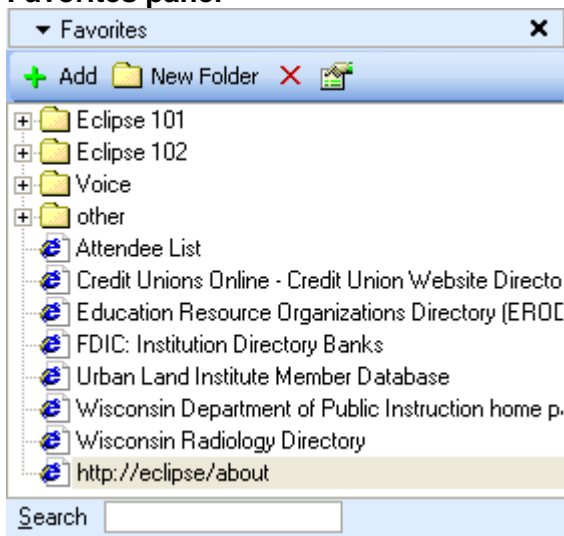
Toggle favorite panel – Use this button to expand or hide your favorite panel.



Toggle page manager panel – Use this button to expand or hide the page manager panel.

Address area – type or paste a website in this area to browse to that site.

Favorites panel



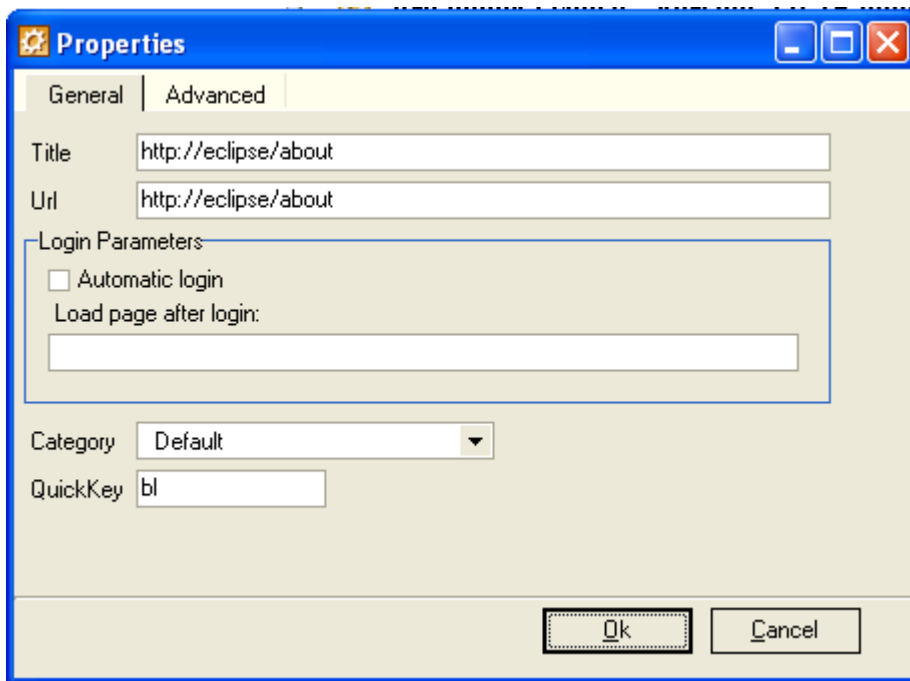
Add to favorites – Adds your currently opened page to your favorites.

Note: available under right click as well

New folder – Creates a new folder in the currently highlighted area to organize favorites.

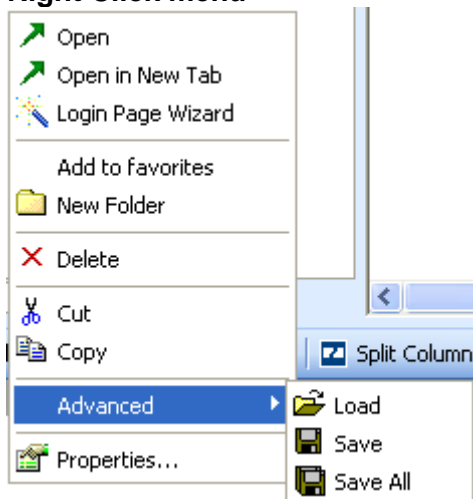
Note: available under right click as well

Properties – View the page properties of your currently highlighted favorite.



Quick Key – Allows the user to browse to this page by typing just the “quick key” into the browser area. Very useful for frequently traveled sites.

Right Click menu



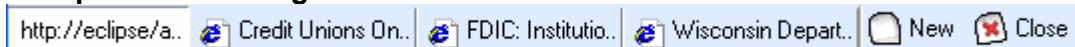
Open – Opens the highlighted favorite in the active window.

Open in new tab – Opens the highlighted favorite in a new window.

Login page wizard – Auto-login to protected pages by storing your password.

Advanced menu – Allows the user to save and load the favorites.

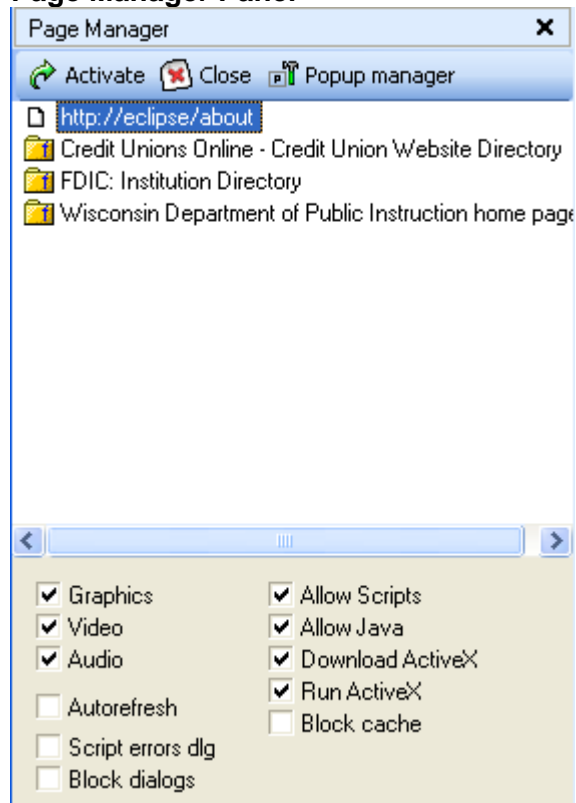
Multiple tab browsing



New – Open a blank tab.

Close – Close your currently active tab.

Page Manager Panel



This panel allows the user to configure every setting on a currently open page. Disable or enable features to change how a page is viewed.

Activate – Applies the setting changes below to your current page.

Close – Close the currently highlighted page.

Popup manager – Access popup blocking settings to block specific.

Quick Capture buttons



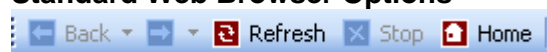
Get Table – Capture currently selected table

Get Links – Capture all links in currently highlighted region

Capture Mode – Turns on a mode that creates a capsule in the capture grid for every page browsed to.

Get Capsule – Capture current page as a single capsule

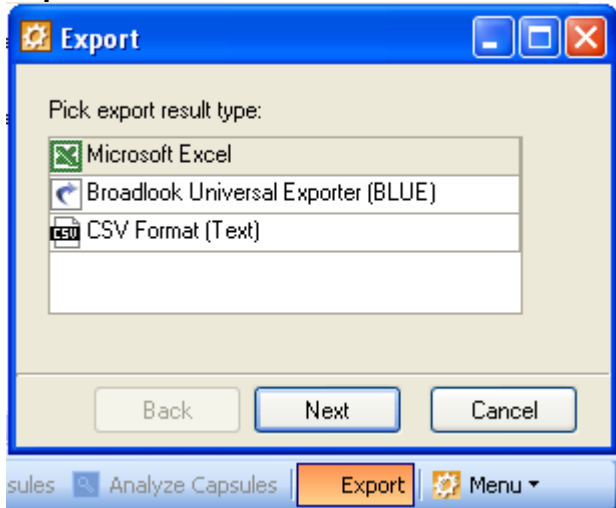
Standard Web Browser Options



The standard web browsing options are present to allow for easy web navigation.

The Capture Grid features include:

Export Wizard



Clicking the export button will launch the export wizard to guide you through exporting your captured data into an external target.

Note: Covered in Export Walkthrough in detail

Quick Cleanup buttons



Clear all – Clears your entire capture grid.

Note: available under right click as well

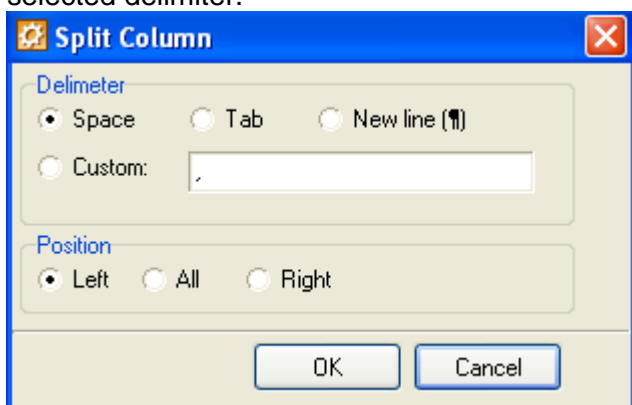
Delete column – Deletes your currently highlighted column.

Note: available under right click as well

Delete rows – Deletes your currently highlighted row(s).

Note: available under right click as well

Split column – Breaks the currently highlighted column into multiple columns based on the selected delimiter.



Note: available under right click as well

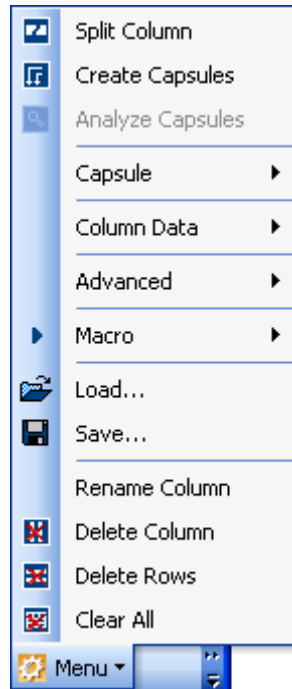
Create capsules – When a column of URLs is highlighted, will create a new column to the right of that column with a stored version of the page the URL loads.

Note: available under right click as well

Analyze capsules – When a column of capsules is highlighted, will allow you to pull any recognized data out into the capture grid.

Note: Covered in Profile page capture in detail

Menu



Allows you to access all editing options via the menu area on the capture grid toolbar.

Save... – Saves your capture grid into an eclipse format to be loaded at a later time.

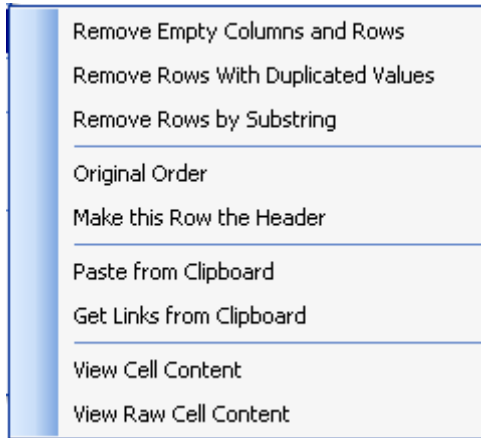
Load... – Loads a saved eclipse capture grid file.

Macro – Build a macro to record an action that can be automated in future captures.

NOTE: Covered in detail in Macro section

Rename Column – Allows you to edit the current column header.

Menu -> Advanced



Remove empty columns and rows – Removes all completely empty columns and rows.

Remove rows with duplicated values – Removes all duplicate values in the currently selected column.

Remove rows by substring – Removes all rows that contain the text you type into the area below:



Original order – Reverts the capture grid to the order of data when captured.

Make this row the header – Converts the current row into the column headers of the capture grid.

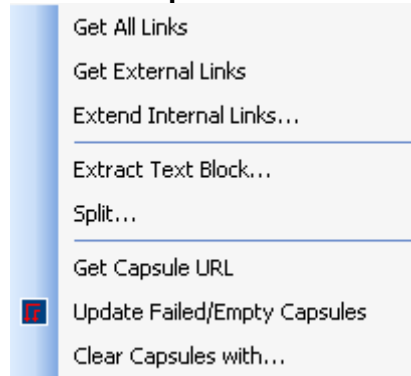
Paste from clipboard – Pastes the information in your clipboard into the capture grid.

Get links from clipboard – Pastes just the links in your clipboard into the capture grid.

View cell content – Click to view the current capsule in a new window.

View raw cell content – Click to view the source of the current capsule in a new window.

Menu -> Capsule

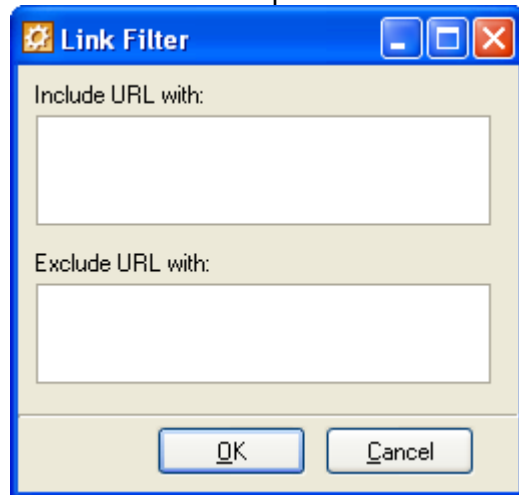


NOTE: Menu not available unless capsule column is highlighted

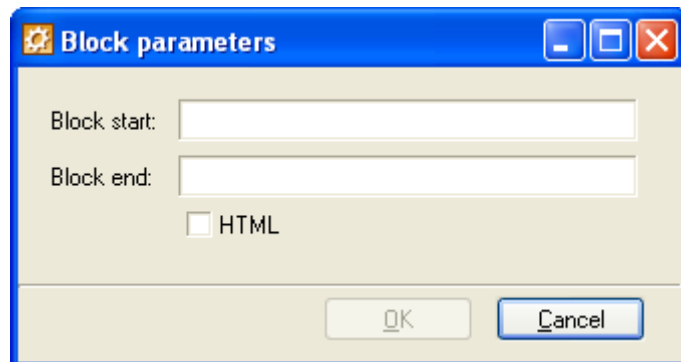
Get all links – Extracts every link in each capsule into your capture grid.

Get external links – Extract just the external links from each capsule into your capture grid.

Extend internal links... – Adds additional internal links into your current URL column. It works by looking through your current capsules and identify any links that are not currently in your grid, but match the link inputted into the blank below:



Extract text block... – Captures a block of text in each of your profile pages based on a common starting point and ending point.



Example:

BUSINESS SUMMARY

A.P. Pharma, Inc. develops pharmaceutical products utilizing its proprietary polymer-based drug delivery systems. It primarily focuses on the development and commercialization of its bioerodible injectable and implantable systems under Biochronomer name in the United States. The company's drug delivery technology is used in anti-nausea, pain management, anti-inflammation, and DNA/RNAI applications. Its principal product, APF530, is in Phase III clinical trial for the prevention of acute and delayed onset chemotherapy-induced nausea and vomiting in patients undergoing emetogenic chemotherapy for cancer. The company also offers APF112, which completed Phase IIa clinical trial for the treatment of post-surgical pain relief; and preclinical stage products comprising APF580 for pain relief, APF328 for local anti-inflammatory, and APF505 for anti-inflammatory treatments. The company was founded in 1983 and is based in Redwood City, California.

[Key Statistics](#)

COMPANY WEBSITES

- [Home Page](#)

Search Yahoo! for:
[More on AP Pharma Inc.](#)

CORP

AP PH
[\(CGQ\)](#)
CGQ I
Pharr
comp
Brought

KEY E

Mr. M
Chief

Mr. G
Interi
Interi
Chair

Mr. S
Chief
Princip
VP of

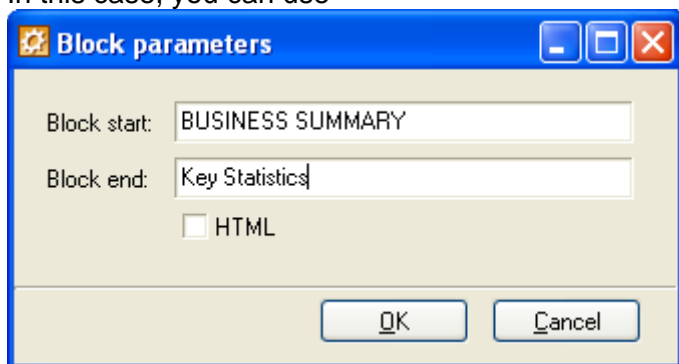
Dr. J
VP of

Mr. J
Sec.

Dollar
comp
endin
"Exerc
the fis

To extract out the text block of business summary, you would need to find a starting and ending point that will be the same on each profile page.

In this case, you can use



Split... – Breaks your single column of capsules into two columns of capsules based on the first time your delimiter

[Home](#) | [Contact Us](#) | [About Us](#) | [Subscribe](#) | [Advertise Online](#) | [Legal Disclaimers](#) | [Media Kits](#) | [Press](#) | [Privacy Statement](#)

Copyright © 2008 Mansueto Ventures LLC. All rights reserved. Inc.com, 7 World Trade Center, New York, NY 10007-2195

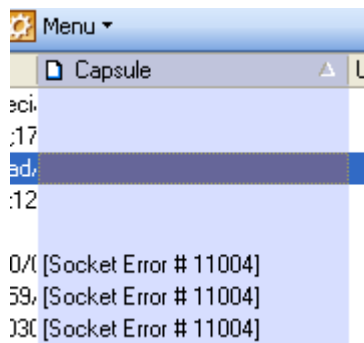
For example, if the image above was at the bottom of every capsule, you might want to split off the section with the address of New York, NY. Many websites will have their information at the bottom of the page, and that can show up in your results during the Analyze step.

To do that, you can fill in your form



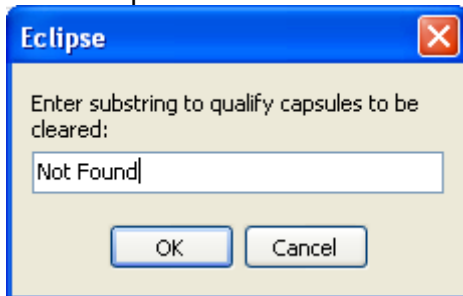
Get capsule URL – This function will create a column of URL's of where your capsules were located. This is a useful feature when you are dealing with URL's that re-direct to another page.

Update failed/empty capsules – Eclipse will re-try the capsules that have resulted in an error or are empty. When doing large captures, you have can stop eclipse in the create capsules process, and then use this update option to pick up right where you left off.



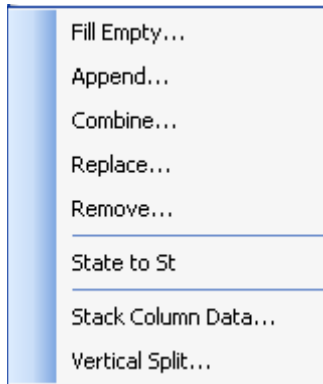
Clear capsules with... – Use this operation to erase all capsules that contain a specific value.

For example:



This would assist you when capturing a list to remove the pages that failed and returned a "Not Found" message on the screen

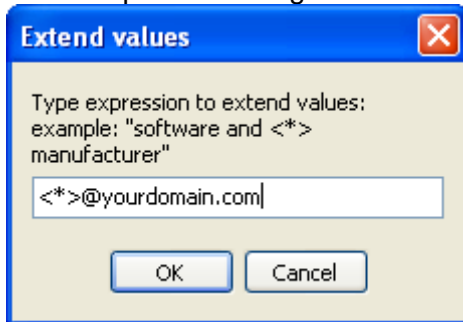
Menu -> Column data



Fill empty... – Fills in for all empty cells in a column a specific value like “None Listed”

Append... – Adds information to the beginning or end of your current column.

An example of use might be



You could use the above on a column of last names to convert it to email addresses (Note:the formula above is only useful if the company uses lastname@company.com as an email structure)

Combine... – Combines 2 or more columns into the first column

Replace... – Standard replace to change all instances of one thing to another.

Remove... – Gets rid of any mentions of the text you type in

State to St – Convert all the states to their two letter abbreviations. Works with USA and CA only.

Stack column data... – Breaks up a single row into many rows. Useful when you have many contacts at one company and want to export them all out.

Vertical split... – Used in the vertical split capture, see process below.

What are the types of lists I will find?

3 Basic

- 1) table format
- 2) list format with a direct link to the company's website
- 3) list format with an indirect link to the company's website (1 or more information pages between the initial link and the company URL)

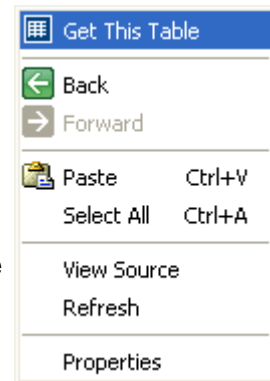
3 Advanced

- 4) Vertical split list
- 5) JavaScripted list
- 6) Multiple levels deep list

How do I capture a table formatted list?

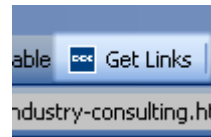
- 1) Right click on the table
- 2) Click the get table button in your right click menu

* if when you right click, you do not see the Get This Table option, that means that your not on a table, and need to use a different capture



How do I capture a direct link formatted list?

- 1) Highlight the links of interest
- 2) Click on the get links on the top Get Links button



How do I capture a profile page formatted list?

- 1) Right click on any of the links to the profile pages
- 2) Choose the Get links like this from your right click menu

URL targeting – the profile page capture works on the idea that the profile links have a similar structure. The window below allows you as a user to choose to target less more of the URL to ensure you get only the links of interest. Most often, you'll just click OK, and your capture will be complete.



How do I capture a vertical split formatted list?

Vertical split lists are a list of information that is all on one page but not in a table format. The idea of the vertical split is a way to give the user a chance to break the single page up, into individual profile pages.

See an in-depth walkthrough at:

http://download.broadlook.com/lessons/eclipse/vertical_split.htm

How do I capture a javascripted list?

JavaScript lists are Profile page lists that when you follow the basic capture process, instead of links with “http://www...” you will see “javascript...”. The capture process starts with finding the correct URL or link and using your Replace function to change the javascript into your true link.

See an in-depth walkthrough at:

<http://download.broadlook.com/lessons/eclipse/javascript.htm>

How do I capture a list with multiple levels deep?

Sometimes a list that you capture doesn't contain everything of interest on the first level deep profile page. You may capture a list of companies but see an additional link on that page that points to a list of employees in that company. The multiple level deep capture process is just a matter of doing the Profile Page capture twice.

See an in-depth walkthrough at:

<http://download.broadlook.com/lessons/eclipse/MultilevelCapture.htm>

What if I still have questions?

- Visit our client center at <http://www.broadlook.com/clientcenter/> and gain access to PDF files, interactive tutorials, recorded demos and signup for live weekly trainings!
- Contact the Broadlook Technical Support Department at 262-754-8080 or cs@broadlook.com